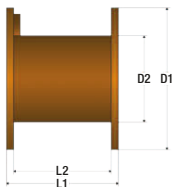


DRUM DIMENSIONS AND WEIGHT

Type (n)	D1	D2	L2	L1	Net Weight	Bulk Space	Volume (Staved)
	(mm)	(mm)	(mm)	(mm)	(kg)	(mm ³)	(mm ³)
06	630	315	335	410	16	0,34	0,23
07	710	355	420	495	20	0,45	0,33
08	800	400	470	545	28	0,54	0,46
09	900	450	470	565	36	0,63	0,59
10	1.000	500	580	675	55	0,81	0,84
12	1.250	630	630	740	85	1,09	1,42
14	1.400	710	750	870	125	1,41	2,04
16	1.600	900	900	1.055	190	1,92	3,18
18	1.800	1.120	1.140	1.315	270	2,63	4,90
20	2.000	1.250	1.140	1.325	365	2,94	6,05
22R	2.240	1.300	1.000	1.185	450	2,96	6,80
22	2.240	1.400	1.140	1.325	480	3,28	7,54
25	2.450	1.500	1.140	1.325	600	3,58	8,98
26S	2.600	1.600	1.140	1.365	770	3,90	10,37
25S	2.450	1.250	1.140	1.325	600	3,58	8,98
25S pal	2.450	1.250	1.270	1.455	650	3,90	9,80
26S pal	2.600	1.250	1.270	1.455	800	3,56	11,00



On the above table you can find our most common types of drum. For each one also we provide internal and external dimensions, weight, bulk space and volume. Please consider that a staved drum increase its dimension D1 of 50 mm in total.